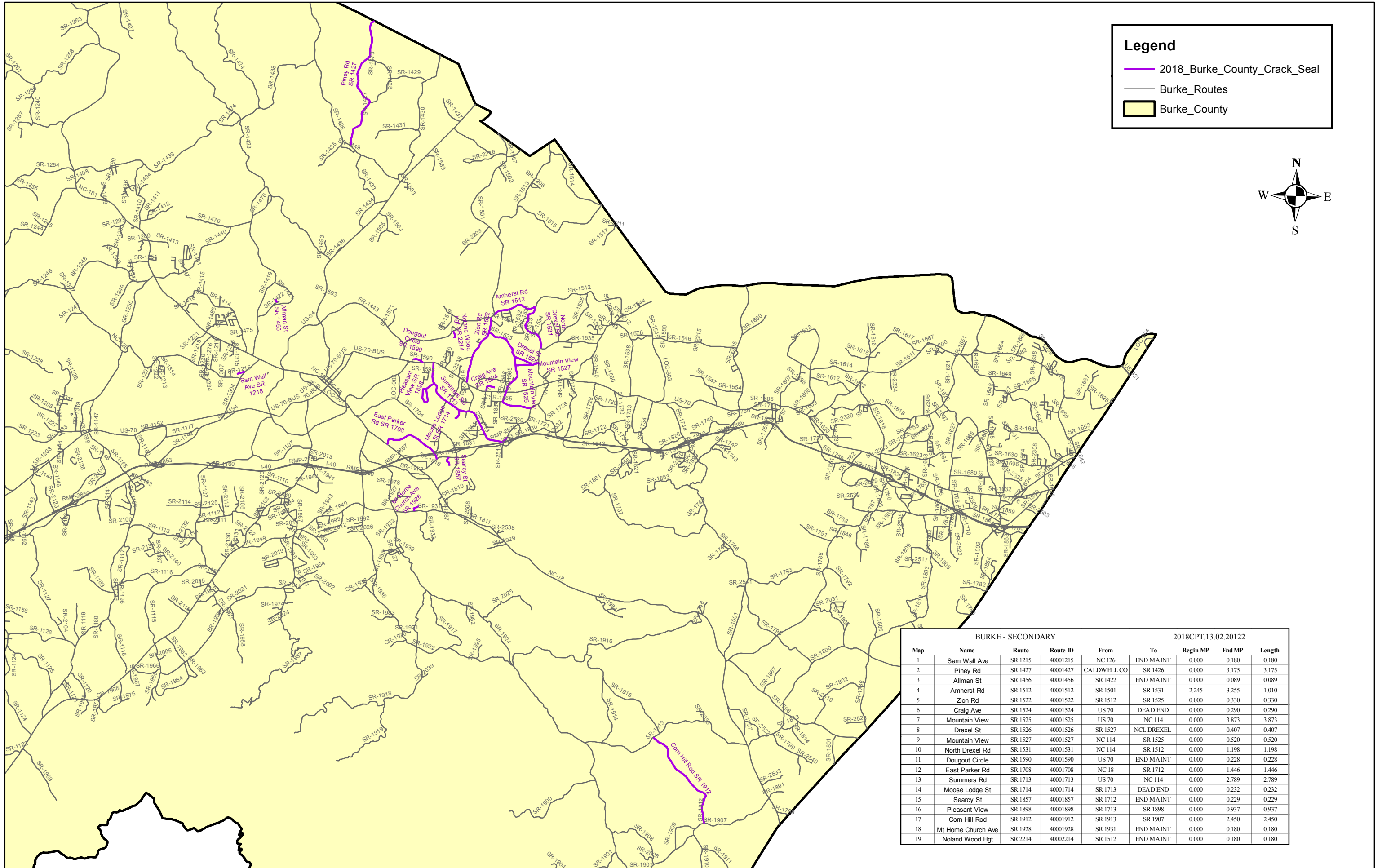
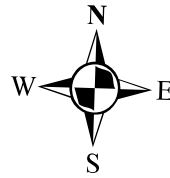


# 2018 Burke County Crack Seal

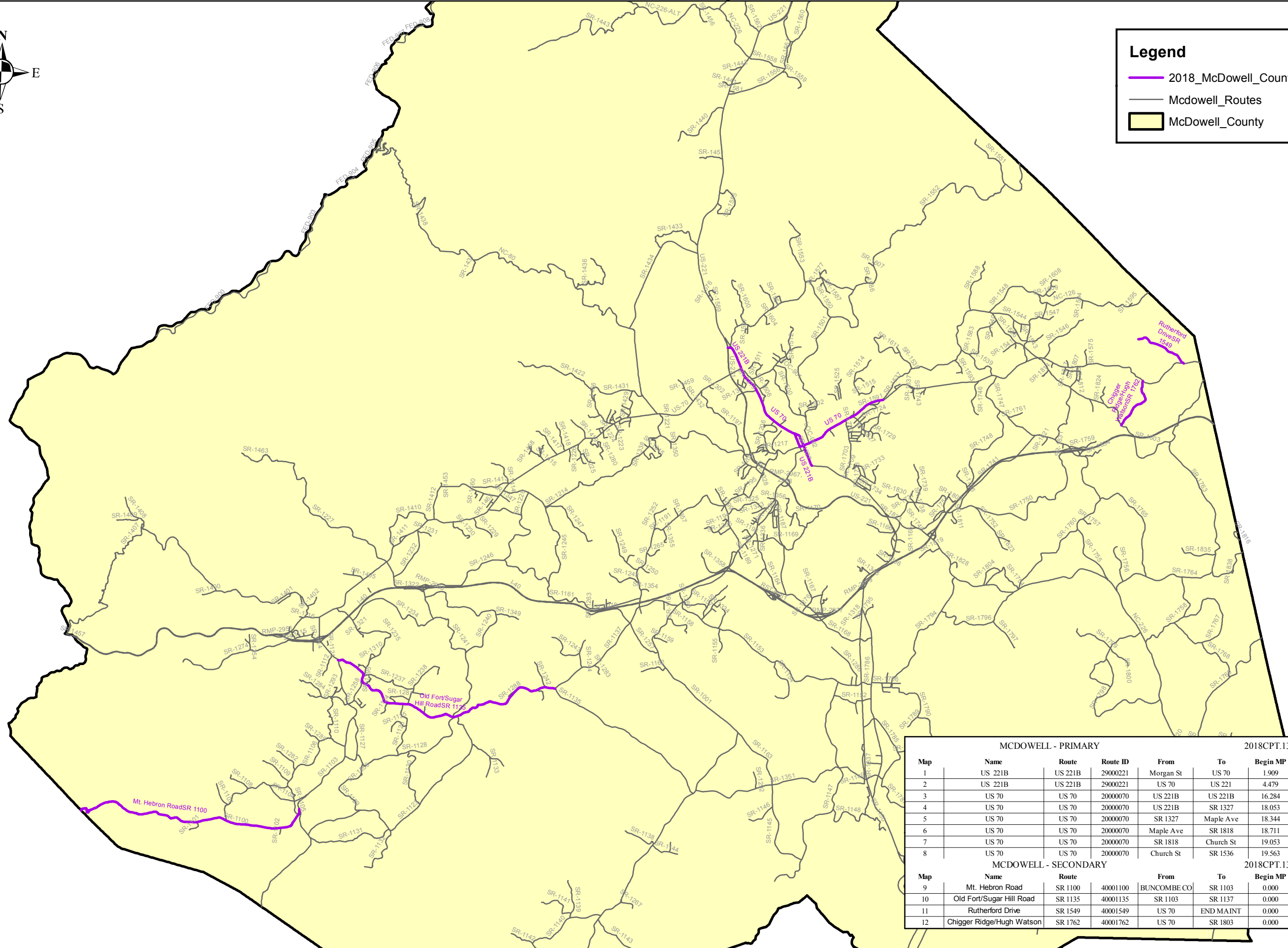


# 2018 McDowell County Crack Seal



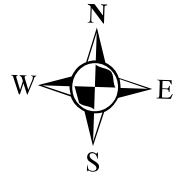
**Legend**

- 2018\_McDowell\_County\_Crack\_Seal
- McDowell\_Routes
- ▭ McDowell\_County



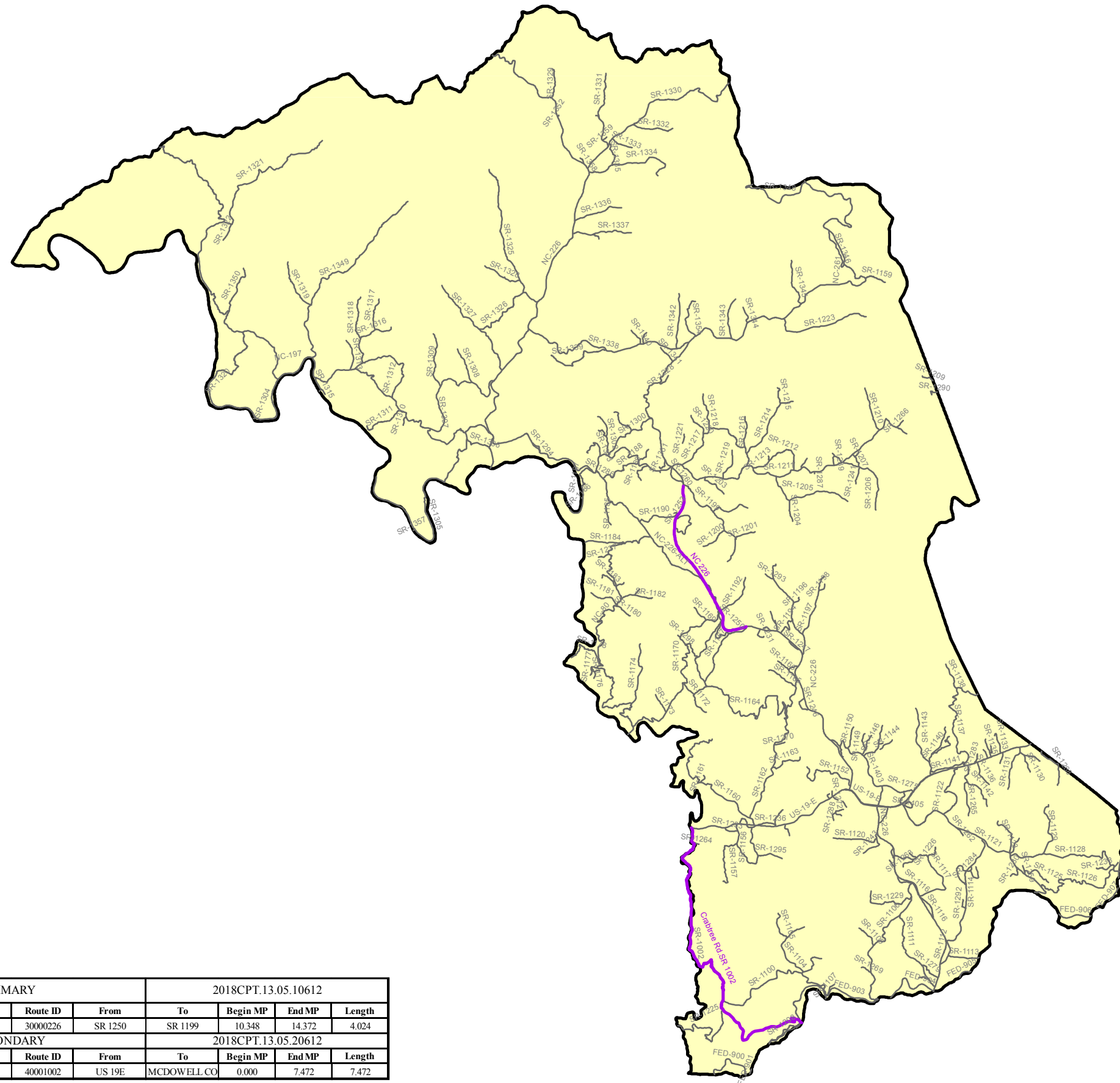
MCDOWELL - PRIMARY						2018CPT.13.04.10592		
Map	Name	Route	Route ID	From	To	Begin MP	End MP	Length
1	US 221B	US 221B	29000221	Morgan St	US 70	1.909	2.680	0.771
2	US 221B	US 221B	29000221	US 70	US 221	4.479	4.996	0.517
3	US 70	US 70	20000070	US 221B	US 221B	16.284	18.053	1.769
4	US 70	US 70	20000070	US 221B	SR 1327	18.053	18.344	0.291
5	US 70	US 70	20000070	SR 1327	Maple Ave	18.344	18.711	0.367
6	US 70	US 70	20000070	Maple Ave	SR 1818	18.711	19.053	0.342
7	US 70	US 70	20000070	SR 1818	Church St	19.053	19.563	0.510
8	US 70	US 70	20000070	Church St	SR 1536	19.563	20.317	0.754
MCDOWELL - SECONDARY						2018CPT.13.04.20592		
Map	Name	Route	Route ID	From	To	Begin MP	End MP	Length
9	Mt. Hebron Road	SR 1100	40001100	BUNCOMBE CO	SR 1103	0.000	5.045	5.045
10	Old Fort/Sugar Hill Road	SR 1135	40001135	SR 1103	SR 1137	0.000	5.303	5.303
11	Rutherford Drive	SR 1549	40001549	US 70	END MAINT	0.000	1.124	1.124
12	Chigger Ridge/Hugh Watson	SR 1762	40001762	US 70	SR 1803	0.000	1.148	1.148

# 2018 Mitchell County Crack Seal



**Legend**

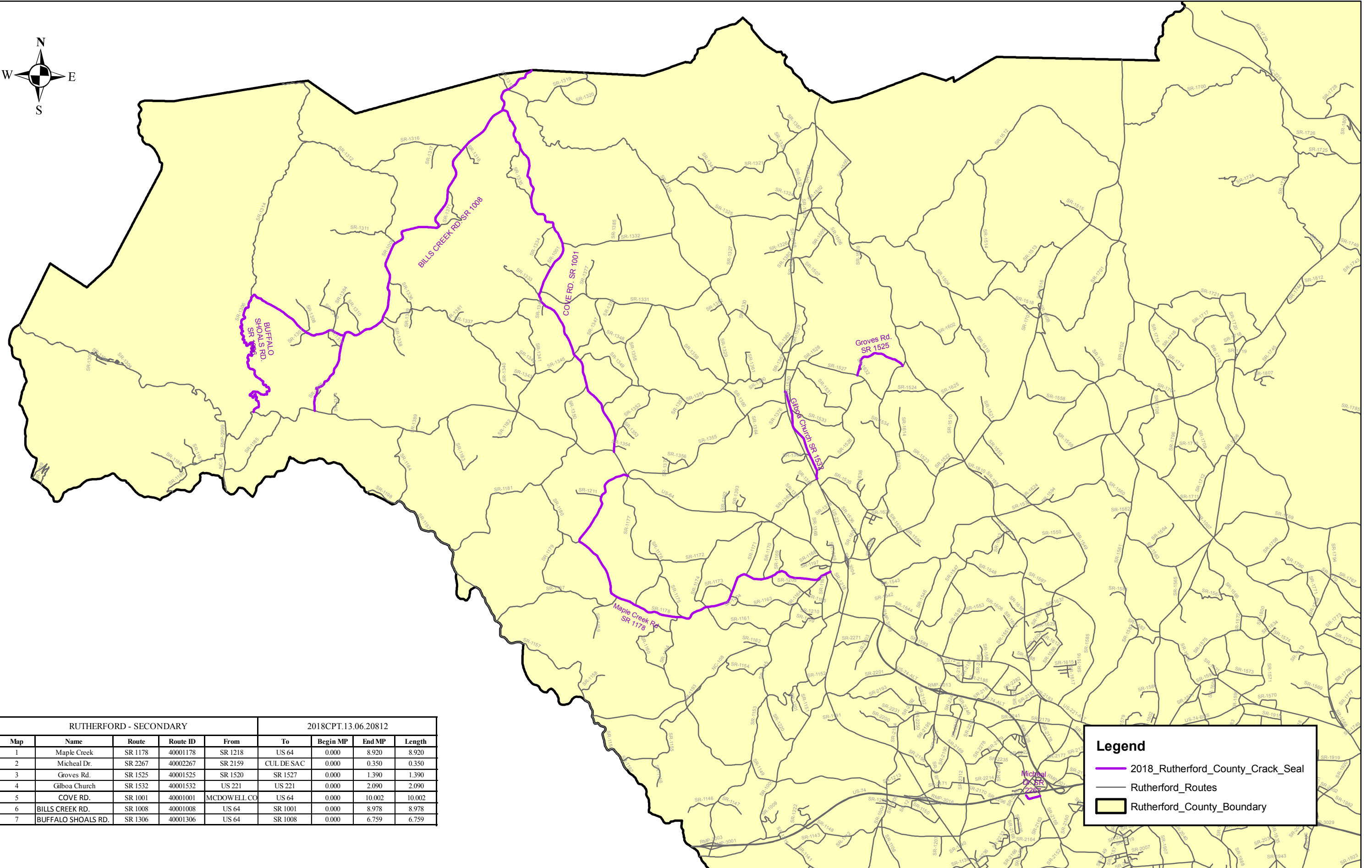
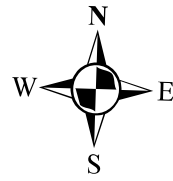
- 2018\_Mitchell\_County\_Crack\_Seal
- Mitchell\_Routes
- Mitchell\_County



MITCHELL - PRIMARY					2018CPT.13.05.10612				
Map	Name	Route	Route ID	From	To	Begin MP	End MP	Length	
1	NC 226	NC 226	30000226	SR 1250	SR 1199	10.348	14.372	4.024	
MITCHELL - SECONDARY					2018CPT.13.05.20612				
Map	Name	Route	Route ID	From	To	Begin MP	End MP	Length	
2	Crabtree Rd.	SR 1002	40001002	US 19E	MCDOWELL CO	0.000	7.472	7.472	



# 2018 Rutherford County Crack Seal



RUTHERFORD - SECONDARY				2018CPT.13.06.20812				
Map	Name	Route	Route ID	From	To	Begin MP	End MP	Length
1	Maple Creek	SR 1178	40001178	SR 1218	US 64	0.000	8.920	8.920
2	Micheal Dr.	SR 2267	40002267	SR 2159	CUL DE SAC	0.000	0.350	0.350
3	Groves Rd.	SR 1525	40001525	SR 1520	SR 1527	0.000	1.390	1.390
4	Gilboa Church	SR 1532	40001532	US 221	US 221	0.000	2.090	2.090
5	COVE RD.	SR 1001	40001001	MCDOWELL CO	US 64	0.000	10.002	10.002
6	BILLS CREEK RD.	SR 1008	40001008	US 64	SR 1001	0.000	8.978	8.978
7	BUFFALO SHOALS RD.	SR 1306	40001306	US 64	SR 1008	0.000	6.759	6.759

**Legend**

- 2018\_Rutherford\_County\_Crack\_Seal
- Rutherford\_Routes
- ▭ Rutherford\_County\_Boundary